

SISCO SUPERIOR CARGO HANDLING SERVICES

MAIN OFFICE: ST.GEORGES HOUSE PARLIAMENT RD3RD FLOOR P.O BOX 13738 CODE 00100 TEL: +254721336756/+254719696110
 Email: siscosuperiorcargohandling@mail.com /info@siscosuperiorcargohandling.co.ke Website: www.siscosuperiorcargohandling.co.ke



Varieties of vegetables and fruits

Beans



All our packaging are tailored to meet your exact specifications

Fine Beans- vailability

Jan	Feb	Mar	Apr	May	Jun	Jul	Aug	Sep	Oct	Nov	Dec
⚠️	⚠️	✅	✅	✅	✅	✅	✅	✅	✅	✅	✅

Runner Beans-Availability

Jan	Feb	Mar	Apr	May	Jun	Jul	Aug	Sep	Oct	Nov	Dec
⚠️	⚠️	✅	✅	✅	✅	✅	✅	✅	✅	✅	✅

SISCO SUPERIOR CARGO HANDLING SERVICES

MAIN OFFICE: ST.GEORGES HOUSE PARLIAMENT RD3RD FLOOR P.O BOX 13738 CODE 00100 TEL: +254721336756/+254719696110
 Email: siscosuperiorcargohandling@mail.com /info@siscosuperiorcargohandling.co.ke Website: www.siscosuperiorcargohandling.co.ke

Peas

All our packaging are tailored to meet your exact specifications

Snow peas–Availability

Jan	Feb	Mar	Apr	May	Jun	Jul	Aug	Sep	Oct	Nov	Dec
✓	✓	⚠	⚠	✓	✓	✓	✓	✓	✓	⚠	✓

Sugar snaps–Availability

Jan	Feb	Mar	Apr	May	Jun	Jul	Aug	Sep	Oct	Nov	Dec
✓	✓	⚠	⚠	✓	✓	✓	✓	✓	✓	⚠	✓

Shelled garden peas–Availability

Jan	Feb	Mar	Apr	May	Jun	Jul	Aug	Sep	Oct	Nov	Dec
⚠	⚠	✓	✓	✓	✓	✓	✓	✓	✓	✓	✓

Chillies



All our packaging are tailored to meet your exact specifications

Serenade–Availability

Jan	Feb	Mar	Apr	May	Jun	Jul	Aug	Sep	Oct	Nov	Dec

SISCO SUPERIOR CARGO HANDLING SERVICES

MAIN OFFICE: ST.GEORGES HOUSE PARLIAMENT RD3RD FLOOR P.O BOX 13738 CODE 00100 TEL: +254721336756/+254719696110
 Email: siscosuperiorcargohandling@mail.com /info@siscosuperiorcargohandling.co.ke Website: www.siscosuperiorcargohandling.co.ke

--	--	--	--	--	--	--	--	--	--	--	--

Jalapino-Availability

Jan	Feb	Mar	Apr	May	Jun	Jul	Aug	Sep	Oct	Nov	Dec

Scotch bonnet-Availability

Jan	Feb	Mar	Apr	May	Jun	Jul	Aug	Sep	Oct	Nov	Dec

Birds eye-Availability

Jan	Feb	Mar	Apr	May	Jun	Jul	Aug	Sep	Oct	Nov	Dec

Freshno-Availability

Jan	Feb	Mar	Apr	May	Jun	Jul	Aug	Sep	Oct	Nov	Dec

Baby Corn

Baby corn-Availability

Jan	Feb	Mar	Apr	May	Jun	Jul	Aug	Sep	Oct	Nov	Dec

Herbs

Chives-Availability

Jan	Feb	Mar	Apr	May	Jun	Jul	Aug	Sep	Oct	Nov	Dec

SISCO SUPERIOR CARGO HANDLING SERVICES

MAIN OFFICE: ST.GEORGES HOUSE PARLIAMENT RD3RD FLOOR P.O BOX 13738 CODE 00100 TEL: +254721336756/+254719696110
 Email: siscosuperiorcargohandling@mail.com /info@siscosuperiorcargohandling.co.ke Website: www.siscosuperiorcargohandling.co.ke

--	--	--	--	--	--	--	--	--	--	--	--

Rosemary-Availability

Jan	Feb	Mar	Apr	May	Jun	Jul	Aug	Sep	Oct	Nov	Dec

Mint-Availability

Jan	Feb	Mar	Apr	May	Jun	Jul	Aug	Sep	Oct	Nov	Dec

Basil-Availability

Jan	Feb	Mar	Apr	May	Jun	Jul	Aug	Sep	Oct	Nov	Dec

Terragon-Availability

Jan	Feb	Mar	Apr	May	Jun	Jul	Aug	Sep	Oct	Nov	Dec

Fruits

Mangoes-Availability

Jan	Feb	Mar	Apr	May	Jun	Jul	Aug	Sep	Oct	Nov	Dec

Avocado-Availability

Jan	Feb	Mar	Apr	May	Jun	Jul	Aug	Sep	Oct	Nov	Dec

SISCO SUPERIOR CARGO HANDLING SERVICES

MAIN OFFICE: ST.GEORGES HOUSE PARLIAMENT RD3RD FLOOR P.O BOX 13738 CODE 00100 TEL: +254721336756/+254719696110
Email: siscosuperiorcargohandling@mail.com /info@siscosuperiorcargohandling.co.ke Website: www.siscosuperiorcargohandling.co.ke

Passion-Availability

Jan	Feb	Mar	Apr	May	Jun	Jul	Aug	Sep	Oct	Nov	Dec

Asian Vegetables

Okra-Availability

Jan	Feb	Mar	Apr	May	Jun	Jul	Aug	Sep	Oct	Nov	Dec

Dudhi-Availability

Jan	Feb	Mar	Apr	May	Jun	Jul	Aug	Sep	Oct	Nov	Dec

Tindori-Availability

Jan	Feb	Mar	Apr	May	Jun	Jul	Aug	Sep	Oct	Nov	Dec

Valore-Availability

Jan	Feb	Mar	Apr	May	Jun	Jul	Aug	Sep	Oct	Nov	Dec

Gwaro-Availability

Jan	Feb	Mar	Apr	May	Jun	Jul	Aug	Sep	Oct	Nov	Dec

SISCO SUPERIOR CARGO HANDLING SERVICES

MAIN OFFICE: ST.GEORGES HOUSE PARLIAMENT RD3RD FLOOR P.O BOX 13738 CODE 00100 TEL: +254721336756/+254719696110
Email: siscosuperiorcargohandling@mail.com /info@siscosuperiorcargohandling.co.ke Website: www.siscosuperiorcargohandling.co.ke

Green Mango-Availability

Jan	Feb	Mar	Apr	May	Jun	Jul	Aug	Sep	Oct	Nov	Dec
✓	✓	✓	✓	✓	✓	✓	✓	✓	✓	✓	✓

Turia-Availability

Jan	Feb	Mar	Apr	May	Jun	Jul	Aug	Sep	Oct	Nov	Dec
✓	✓	✓	✓	✓	✓	✓	✓	✓	✓	✓	✓

Flowers

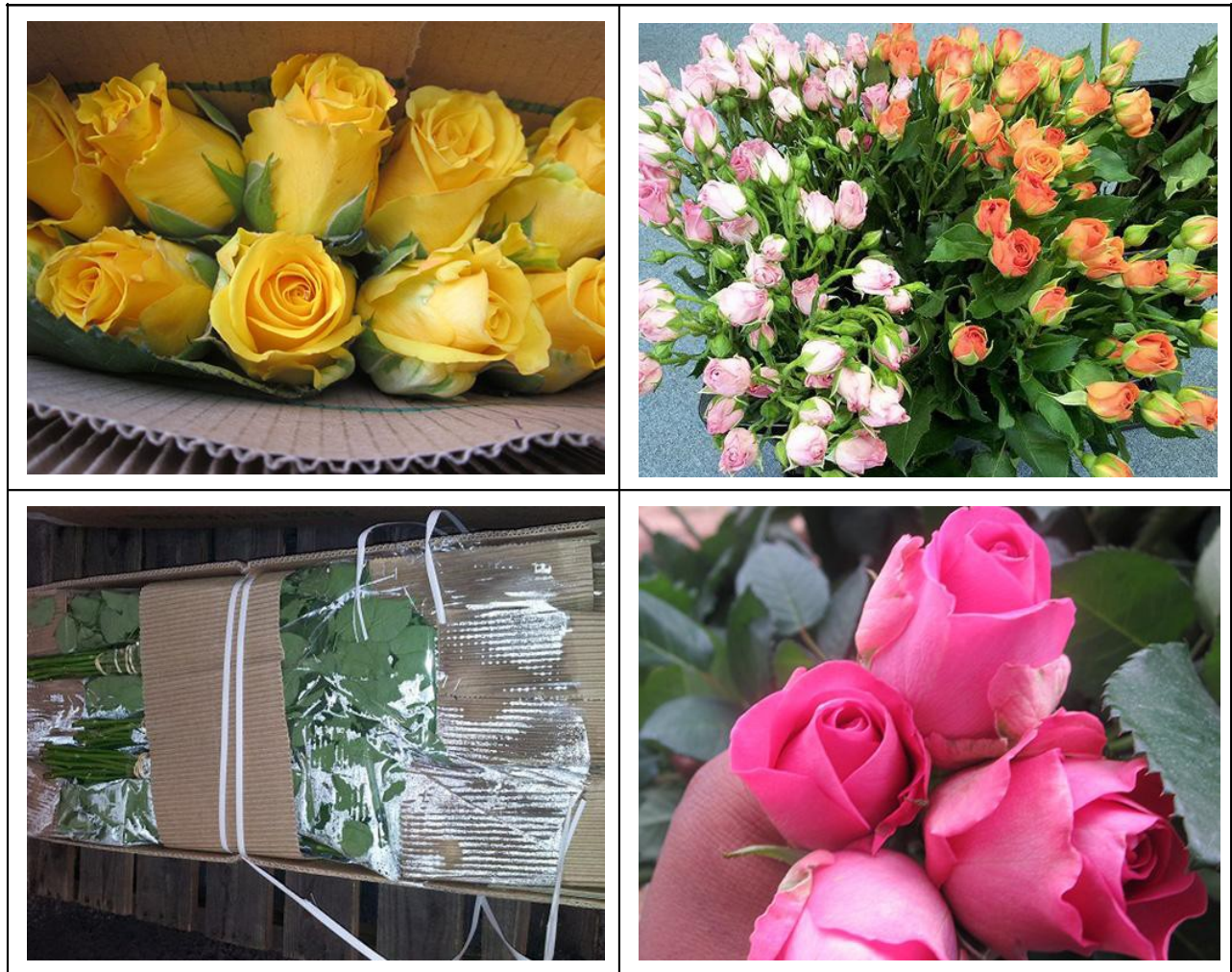
Fresh Cut Flowers are our latest offering. We are working with the most reputable growers in the industry to ensure that we bring you the best quality flowers. There is surely a beautiful relationship between food, fruits and flowers. The flower range include.

- Ruscus
- Hypericum
- Roses
- Gypsophilla



SISCO SUPERIOR CARGO HANDLING SERVICES

MAIN OFFICE: ST.GEORGES HOUSE PARLIAMENT RD3RD FLOOR P.O BOX 13738 CODE 00100 TEL: +254721336756/+254719696110
Email: siscosuperiorcargohandling@mail.com /info@siscosuperiorcargohandling.co.ke Website: www.siscosuperiorcargohandling.co.ke



Quality Assurance

It's the company policy to supply produce that meet the highest standard in quality and safety for human consumption. Our company has and continues to invest heavily in training of all our personnel who come into contact with the produce directly or indirectly. It has established technical and ethical requirements to all employees and supply partners.

Good practice: We Commit to the pursuit of Global Gap, BRC, HACCP and other good practice systems with a view to ensuring the highest quality and safety possible for our customers.

SISCO SUPERIOR CARGO HANDLING SERVICES

MAIN OFFICE: ST.GEORGES HOUSE PARLIAMENT RD3RD FLOOR P.O BOX 13738 CODE 00100 TEL: +254721336756/+254719696110
Email: siscosuperiorcargohandling@mail.com /info@siscosuperiorcargohandling.co.ke Website: www.siscosuperiorcargohandling.co.ke

- Cold chain regime consist of high humidity coolers, temperature controlled pack house, finished product, ballast chillers to ensure products are held at optimal temperature prior to delivery at JKIA, which is a 5 minutes drive from our pack house.
- Full produce traceability

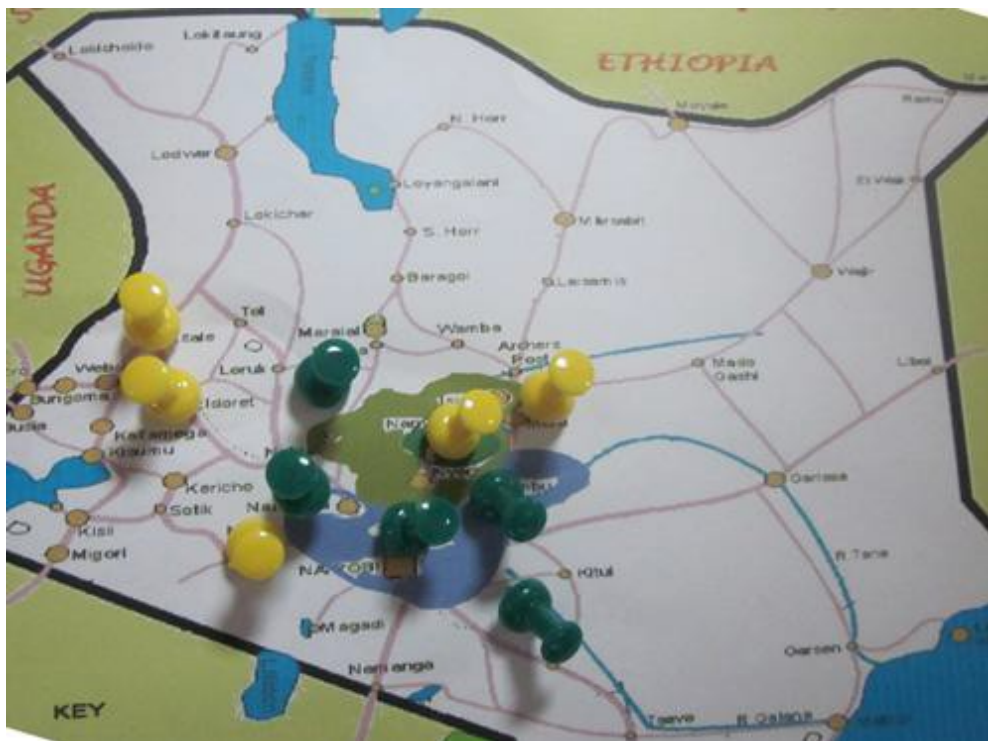
Farming:

Sisco Superior cargo handling services ltd and her divisions fresh growing Model is centered on strong partnership with Medium size growers.

To take advantage of the various micro climates, the company has a wide geographical spread across the country. The growing areas include Eastern, Central and parts of the Rift valley provinces.

This is one of the factors that have continued to enable the company to mitigate the risks of crop failure(s) that emanate from extreme weather on certain months of the year.

The following is a map of the locations where our farms are located.



SISCO SUPERIOR CARGO HANDLING SERVICES

MAIN OFFICE: ST.GEORGES HOUSE PARLIAMENT RD3RD FLOOR P.O BOX 13738 CODE 00100 TEL: +254721336756/+254719696110
Email: siscosuperiorcargohandling@mail.com /info@siscosuperiorcargohandling.co.ke Website: www.siscosuperiorcargohandling.co.ke

Why Sisco superior cargo Fresh?

Sisco superior cargo through its subsidiary divisions and network groups beside cargo clearing and coffee business has a qualified, experienced and committed team of staff dedicated to achieving the company's mission and this drives on constantly investing in infrastructure systems and above all our staff who are our greatest asset.

One of Sisco superior cargo Fresh's primary objectives is to bring you value. From innovative products and services that distinguish you from the rest of the pack to capturing premium quality Kenyan freshness that provides you with safe and healthy products, we're committed to enhancing your ability to be a competitive industry leader.

Our Value Proposition is centered around strong leadership, food safety, Integrity, diligence, teamwork, dedication, and a firm focus on quality. This strong support, combined with expertise, a dependable team of knowledgeable professionals and a stringent quality control program; come together to bring service and quality that makes you a winner by consuming our quality products.

Our involvement provides the personalized service and support that maximizes value and allows you to leverage your time and focus your efforts on strategic and business development activities.

Our hands-on approach and expertise dramatically increase the likelihood of your commercial success.

We like to think that due to our expertise, experience and personal touch, we are big enough to supply all your fresh produce requirements, yet small enough to call for your needs on an individual basis an ethic that has been fundamental within the company since the beginning. The leader of the TEAM Sisco is on the ground 24/7 with direct contact with the customers handling all their individual needs with passion. That's what caring and listening partnerships is all about.

Our Values

Team work: We develop long term business relationship with our customers, we thrive to build good works within and out.

Sensitivity: We appreciate the diversity of our clients and thrive in their uniqueness and deliver customized services.

Building a caring and listening partnership with our customers in agricultural produce and floriculture.

SISCO SUPERIOR CARGO HANDLING SERVICES

MAIN OFFICE: ST.GEORGES HOUSE PARLIAMENT RD3RD FLOOR P.O BOX 13738 CODE 00100 TEL: +254721336756/+254719696110
Email: siscosuperiorcargohandling@mail.com /info@siscosuperiorcargohandling.co.ke Website: www.siscosuperiorcargohandling.co.ke

We facilitate them to achieve exceptional performance.

Team Work

Our approach: Team building in and out of the company to supply top quality products consistently.

Terms of Payments:-

We are flexible in terms of sales and guarantee delivery of results for our quality products thus why we agree to transact on advance payment of 60% of the CIF value swift transfer/open LC terms at the consumers costs and 100% advance against Inspection certificates as well against the Airway bill and related needs.

Hope to get favorable orders from your contacts in Italy, Hungery and Europe at Large.